



Clean the World®

BOX INSTRUCTIONS



Step 1:

Assemble a Clean the World cardboard box and place a liner inside.



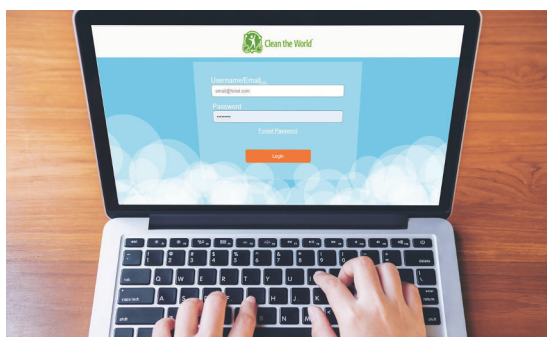
Step 2:

Collect your soap and/or bottled amenities. Remember to keep soap and bottles separate!



Step 3:

When the box is full, tie the liner in a knot, check soap or bottles on the box, and tape the box shut.



Step 4:

To return your box, log into your account at portal.cleantheworld.org and visit the Box Dashboard.



Step 5:

Select "Return Box", print your shipping label and attach it to the box, and place your box where your packages are normally picked up.