

# BOX COLLECTION INSTRUCTIONS

If you aren't registered with Clean the World, please complete the Clean the World customer portal request form to initiate the registration process.



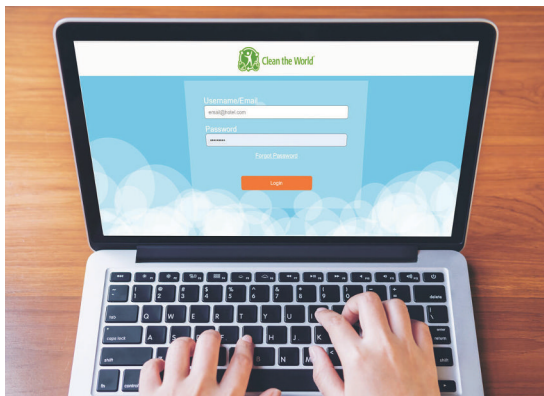
## Step 1:

Find a location to place your Clean the World box and place a liner inside.



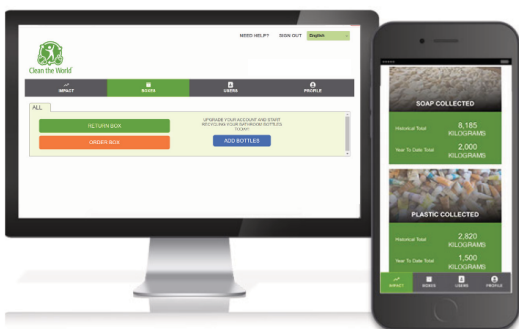
## Step 2:

Collect plastic amenity bottles from guest rooms and place them in the box. Ensure the box contains only amenity bottles and no trash or miscellaneous items. When the box is full, tie the liner in a knot and secure the lid on the box.



## Step 3:

When your box is full, visit [portal.eu.cleantheworld.org](http://portal.eu.cleantheworld.org) to request a pick up. Go to the Box Dashboard and select "Return Box." This will alert your Clean the World contact to schedule a pick up date for you.



## Step 4:

Invite other team members to use Clean the World's Customer Portal. Visit [portal.eu.cleantheworld.org](http://portal.eu.cleantheworld.org) to view your impact.